

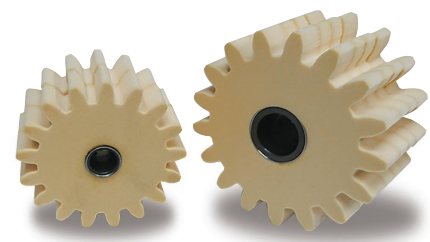


# KDLs Schmiersysteme KPUS/KPUSCP Lubricated Spur Gears

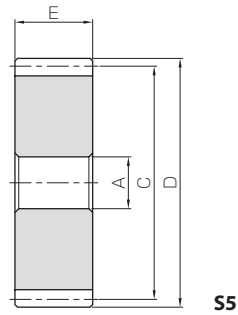
Module 1.5 ~ 6 Circular pitch 5, 10

Lubrication Spur Gears

New Product



Specifications	
Gear teeth	Standard full depth
Pressure angle	20°
Material	Polyurethane foam



Catalog Number	Module	No. of teeth	Shape	Bore		Pitch dia. C	Outside dia. D	Face width E	Mounting shaft to be set
				A					
KPUS1.5-24	m1.5	24	S5	12	12	36	39	15	MAS1.5 or MAR1.5
KPUS2-17	m2					34	38	20	MAS2 or MAR2
KPUS2.5-17	m2.5					42.5	47.5	24	MAS2.5 or MAR2.5
KPUS3-17	m3					51	57	30	MAS3 or MAR3
KPUS4-17	m4					68	76	40	MAS4 or MAR4
KPUS5-17	m5					85	95	50	MAS5 or MAR5
KPUS6-17	m6	17	S5	20	20	102	114	60	MAS6 or MAR6
KPUS8-17 (made to order)	m8					136	152	80	MAS8 or MAR8
KPUS10-17 (made to order)	m10					170	190	100	MAS10 or MAR10

Catalog Number	Pitch mm (Module)	No. of teeth	Shape	Bore		Pitch dia. C	Outside dia. D	Face width E	Mounting shaft to be set
				A					
KPUSCP5-24	CP5 (1.5915)	24	S5	12	12	38.2	41.4	15	MAS1.5 or MAR1.5
KPUSCP10-15	CP10 (3.1831)	15				47.7	54.1	30	MAS3 or MAR3

- [Application Hints] ① Can be used in temperatures from -30 to 150° C.  
 ② Setting is possible to either a rack or a pinion, but we recommend a pinion as it can provide proper lubrication.  
 ③ Avoid operations with high load until grease is applied to the gear teeth of the rack gears and pinion gears.

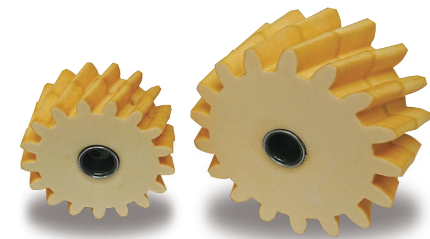


# DLS Schmiersysteme PUH Lubricated Helical Gears

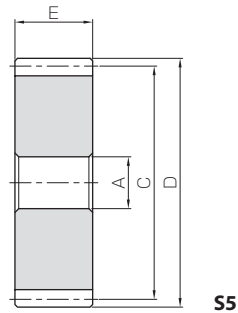
Module 1.5 ~ 6

Lubrication Helical Gears

New Product



Specifications	
Reference section of gear	Normal plane
Gear teeth	Standard full depth
Pressure angle	20°
Helix angle	19°31'41"
Material	Polyurethane foam



Catalog Number	Module	No. of teeth	Direction of spiral	Shape	Bore		Pitch dia. C	Outside dia. D	Face width E	Mounting shaft to be set				
					A									
KPUH1.5-24R KPUH1.5-24L	m1.5	24	R L	S5	12	12	38.2	41.2	15	MAS1.5 or MAR1.5				
KPUH2-17R KPUH2-17L	m2						36.1	40.1	20	MAS2 or MAR2				
KPUH3-17R KPUH3-17L	m3						54.1	60.1	30	MAS3 or MAR3				
KPUH4-17R KPUH4-17L	m4						72.2	80.2	40	MAS4 or MAR4				
KPUH5-17R KPUH5-17L	m5						17	R L	S5	20	90.2	100.2	50	MAS5 or MAR5
KPUH6-17R KPUH6-17L	m6										108.2	120.2	60	MAS6 or MAR6
KPUH8-17R KPUH8-17L (made to order)	m8	17	R L	S5	20	144.3	160.3	80	MAS8 or MAR8					
KPUH10-17R KPUH10-17L (made to order)	m10					180.4	200.4	100	MAS10 or MAR10					

- [Application Hints] ① Can be used in temperatures from -30 to 150° C.  
 ② Setting is possible to either a rack or a pinion, but we recommend a pinion as it can provide proper lubrication.  
 ③ Avoid operations with high load until grease is applied to the gear teeth of the racks & pinions.

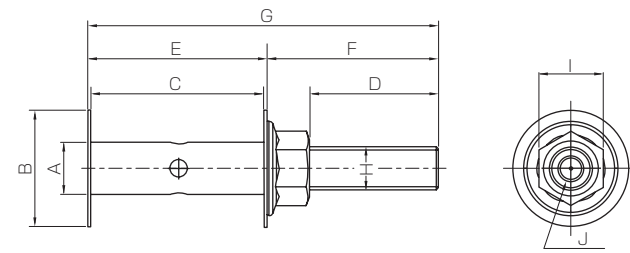


# KDLs Schmiersysteme Mounting Shaft for Lubricated Gears

Mounting Axes

New Product

## ● Straight Type



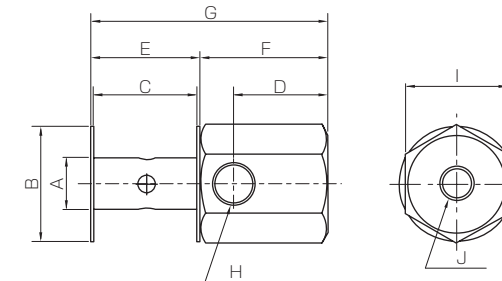
Set Example

Surface treatment: Nickel plated

Catalog Number	A	B	C	D	E	F	G	H	I	J
										Connected screw
KMAS1.5	12	27	15.2	34.2	16.4	44	60.4	M10	15	M6
KMAS2			20.2	29.8	21.4	39.8	61.2			
KMAS2.5			24.2	29.8	25.4	39.8	65.2			
KMAS3			30.2	29.8	31.4	39.8	71.2			
KMAS4			40.2	29.8	41.4	39.8	81.2			
KMAS5			50.2	49.1	51.4	64.9	116.3			
KMAS6	20	60	60.2	49.1	61.4	64.9	126.3	M16	24	G1/8"
KMAS8 (made to order)	20	60	80.2	49.1	81.4	64.9	146.3	M16	24	G1/8"
KMAS10 (made to order)		100	100.2	49.1	101.4	64.9	166.3			

[Application Hints] ① Tube connector is not included.

## ● Right Angle Type



Set Example

Surface treatment: Nickel plated

Catalog Number	A	B	C	D	E	F	G	H	I	J
								Connected screw		
KMAR1.5	12	27	15.2	22	16.4	30	46.4	G1/8"	24	M8x10
KMAR2			20.2		21.4		51.4			
KMAR2.5			24.2		25.4		55.4			
KMAR3			30.2		31.4		61.4			
KMAR4			40.2		41.4		71.4			
KMAR5			50.2		51.4		81.4			
KMAR6	20	60	60.2	49.1	61.4	91.4	M16	24	G1/8"	
KMAR8 (made to order)	20	60	80.2	22	81.4	111.4				
KMAR10 (made to order)		100	100.2	49.1	101.4	30	131.4			

[Application Hints] ① Tube connector is not included.